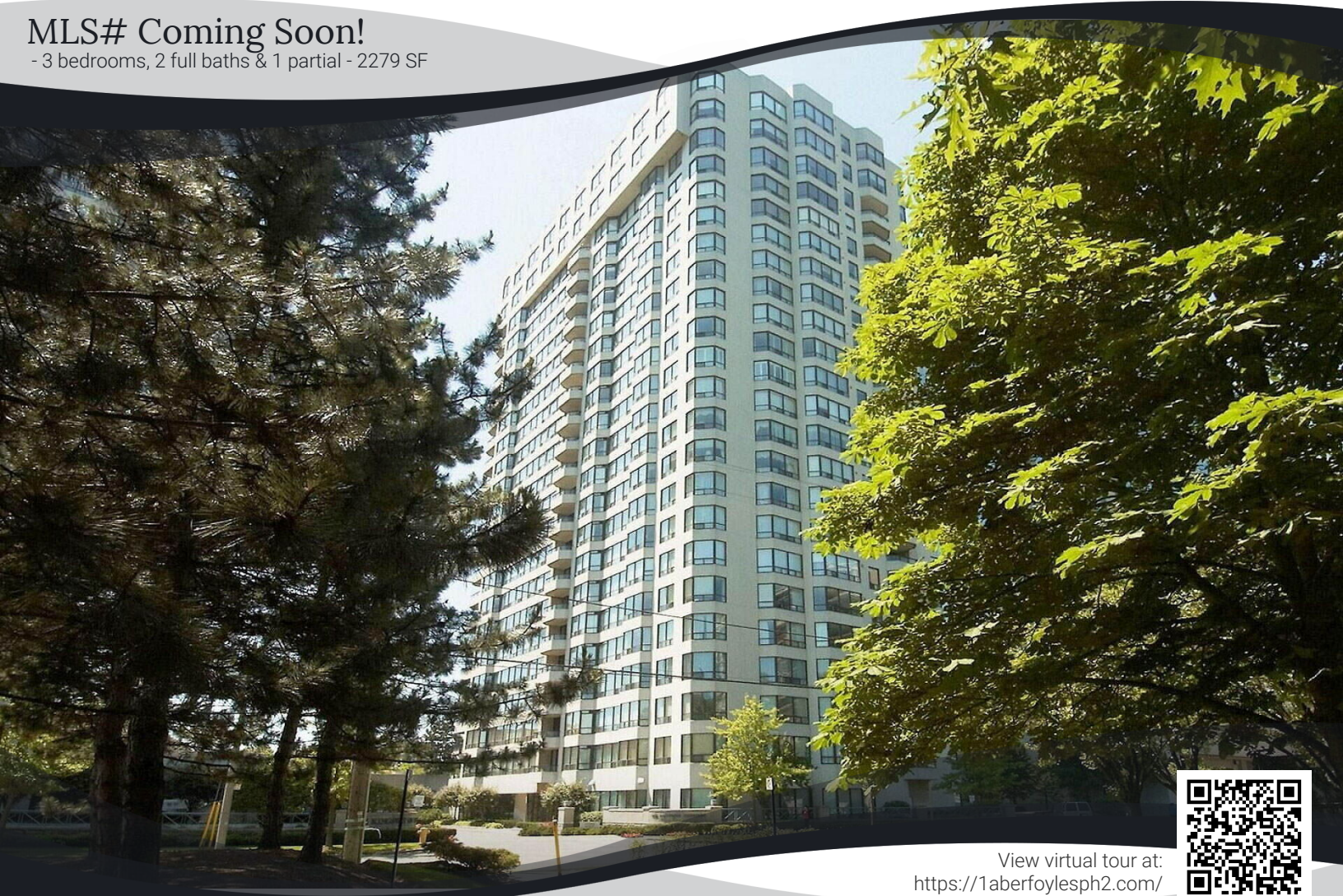


# 1 Aberfoyle Crescent Suite SPH 2

SPH2 - 1 Aberfoyle Crescent, Etobicoke, ON M8X 2X8

## MLS# Coming Soon!

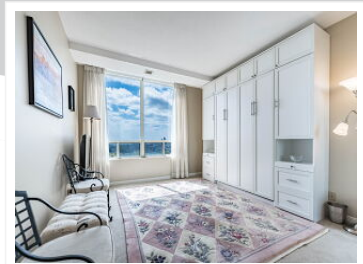
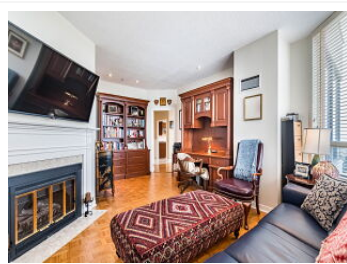
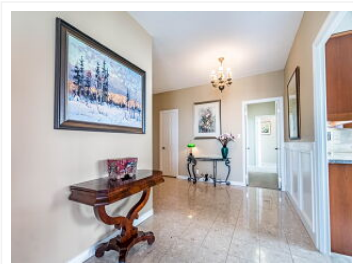
- 3 bedrooms, 2 full baths & 1 partial - 2279 SF



View virtual tour at:  
<https://1aberfoylesph2.com/>



Kingsway On-The-Park - one of the West End's most prestigious condominiums. SPH 2 provides spectacular & unobstructed views of Lake Ontario & Downtown. Indulge yourself in 2279 square feet of luxurious living space with 9 foot ceilings & a formal foyer. Wraparound windows surround your 450+ SF living & dining area. A gas fireplace enhances your versatile family/office/3rd bedroom. The updated kitchen offers stainless steel prestige appliances, a gourmet gas stove & cherrywood cabinetry. The breakfast area overlooks the lake from picture windows. An oversized master bedroom includes an updated bathroom with his & her sinks, marble counters, jacuzzi tub & separate shower while two large picture windows provide breathtaking southerly views. The large (175 SF) second bedroom with its own ensuite bathroom is ideal for an additional family member or a live-in caregiver. For downsizers there are 2 storage areas in the suite and two owned lockers in the basement. Also included are two



**Myron Dylinsky**  
Sales Representative

(416) 670-4480  
[myrondylinsky@gmail.com](mailto:myrondylinsky@gmail.com)  
<http://www.dylinsky.com>

**Royal LePage Real Estate  
Services Ltd., Brokerage**

(416) 236-1871

